

A better way to disinfect water

PRODUCT CATALOGUE



AIS Australian
Innovative
Systems™

• OUR MISSION •

AIS' mission is to create safe, economical and versatile products that help protect humans and habitats against waterborne pathogens and the transmission of infectious disease.

AIS' vision is to ensure that Earth's fixed supply of water remains clear and healthy - despite increases in population and economic activity.

Contents •

TDS Levels	3
AutoChlor™	4
Ecoline™	6
AutoChlor™ Residential	8
MineralChlor™	13
Chrome™	14
Ecoline™ Residential	15
Specification Drawings	17
Charts	22

Systems for virtually any TDS Level

From large scale commercial applications to residential swimming pools, AIS has you covered.

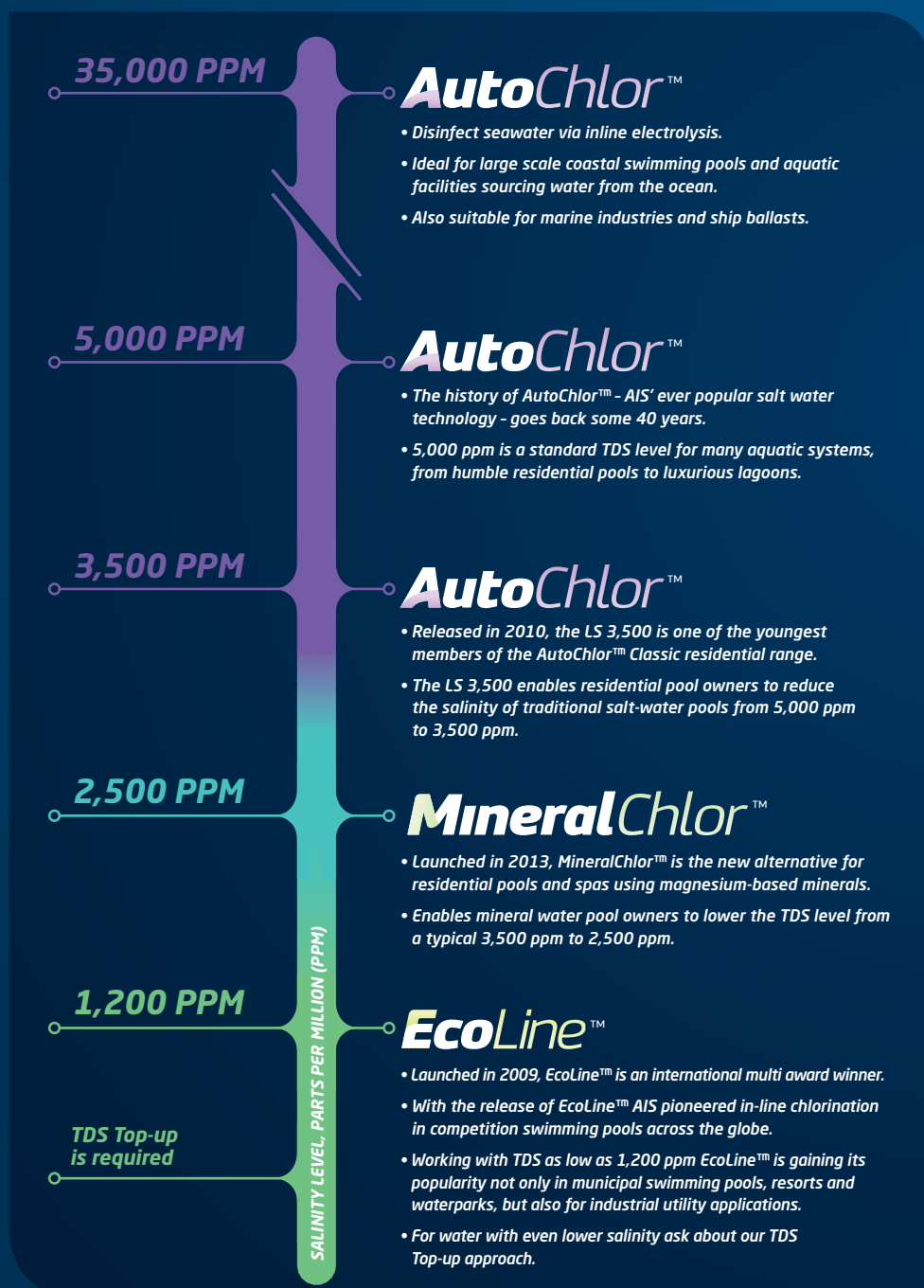
AIS offers a chlorination solution for water of virtually any TDS Level ideally ranging from 1,200ppm to 35,000ppm.

For water below 1,200ppm a simple TDS Top-Up may be all that is required to commence AIS chlorination and bid farewell to the endless cycle of traditional chemical dosing forever!

TDS TOP-UP

Today, many commercial facilities are delighted to learn that they already have surprisingly high mineral content water. Some can switch immediately to chlorination.

For others (with TDS levels in the hundreds) a simple, easy and affordable TDS Top-Up may be all that is required to achieve the desired 1,200ppm levels that AIS Technology is able to operate from.



Discover the benefits

- Stops the endless cycle of traditional chemical dosing.
- One machine, installed in the plant room and plumbed into the pipework.
- Disinfects via electrolysis as water flows through Genuine AIS Anodes.
- Reduces chloramines and improves air and water quality.
- Minimal operator attendance and maintenance.
- Workplace Health and Safety advantages.
- Chloramines oxidised on each pass through the cell; eliminates the need for frequent shock-dosing.
- Helps to stabilise TDS levels.
- Helps to reduce water consumption and water charges.
- Extensive customer support and warranty programs.
- Tried and tested technology in operation all over the world.

AutoChlor[®]

ADVANCED SALT WATER CHLORINATORS

APPLICATIONS

- **Residential:**
Swimming pools and spas
- **Commercial:**
Aquatics and Leisure Industry; Marine Industry and Offshore;

BENEFITS

- Award winning Australian technology
- Disinfects water onsite and inline
- Bid farewell to the endless cycle of traditional chlorine [i] dosing
- Eliminates dependence on commercial chlorine suppliers
- Reduce risk associated with chemical storage and handling
- Reduce maintenance and operational costs

Commercial or Residential use

AutoChlor is a multi-award winning, inline salt water chlorinator suitable for residential or commercial applications and one of Australia's most well-known and trusted brands.

AIS' extensive range of AutoChlor chlorinators means that AutoChlor technology is equally suited to the backyard swimming pool as it is for large scale, commercial projects such as aquatic centres, water theme parks or municipal lagoons.

AutoChlor conveniently disinfects water of almost any composition, onsite and inline meaning you can bid farewell to the endless cycle of traditional chlorine [i] dosing.

In a process known as electrolysis, salt water passes through electrolytic cells which convert the salts and minerals present in the water into chlorine. The chlorine is then distributed directly into the water keeping it sparkling clear and germ and bacteria free.

AutoChlor technology can deliver significant savings in operational and maintenance costs when compared with other disinfection systems and can be new or retrofitted.

For commercial applications AutoChlor can be delivered as a skid-mounted, pre-assembled unit. AIS' commercial chlorinators also boast a host of extra features delivering further value for money.



[i] Typically Sodium Hypochlorite or Calcium Hypochlorite





SRC SERIES

SALT WATER ELECTROLYSERS CHLORINE GENERATORS

- Reverse polarity leads to reduction in maintenance by de-scaling calcium build-up on the electrode
- Powered by switch mode power supply (SMPS)
- Considerably more efficient than transformer powered chlorine generators
- Expected electrode life - 45,000 hours
- Build-in cell cleaning function
- Sealed, internally cooled power supply
- Skid mounted design (IP44)
- Salinity 5,000 ppm - 35,000ppm / sea water
- Warranty - 3 years

MODEL	CHLORINE*	POWER CONSUMPTION**	MINIMUM WATER FLOW	PIPE DN	DIMENSION (PACKAGED)	WEIGHT GROSS
	Grams / Hour	KW	Litres/Minute	mm	L x W x H (cm)	Kg
SRC-100	100	0.58	150	50	92 x 78 x 113	140
SRC-150	150	0.87	150	50	92 x 78 x 113	160
SRC-200	200	1.16	150	50	100 x 97 x 112	190
SRC-300	300	1.74	150	50	100 x 97 x 112	200
SRC-400	400	2.32	150	50	101 x 102 x 123	210
SRC-500	500	2.9	150	50	101 x 102 x 123	220
SRC-625	625	3.63	150	50	101 x 102 x 123	200
SRC-800	800	4.64	480	100	160 x 65 x 159	350
SRC-1000	1000	5.8	390	80	140 x 100 x 159	400
SRC-1250	1250	7.25	390	80	140 x 100 x 159	420
SRC-1500	1500	8.7	390	80	140 x 100 x 159	450
SRC-2000	2000	11.6	720	125	170 x 118 x 159	650
SRC-2500	2500	14.5	720	125	170 x 118 x 159	700
SRC-3000	3000	17.4	720	125	170 x 118 x 159	750



NB: Chlorine generator SR/SA Series (Non-revers polarity) & larger capacity models are available upon request. For full listing please visit www.aiswater.com.au.
 *at 5000 mg/L TDS. Please note that pH greater than 7.5 increases chlorine demand. **at 25°C. Normal operation pressure up to 275 kPa, up to 1000 kPa can be built upon request. Data provided in the table above to be used as a guide only. Spare parts readily available including replacement cells. Recommended TDS level for AutoChlor operation (for home or commercial use): 5,000ppm

▶ APPLICATIONS

- Swimming pools & water features
- Recycled water
- Grey water
- Sewerage and wastewater
- Irrigation water
- Food processing plants
- Agricultural lagoons

▶ BENEFITS

- Eliminate the dependence on commercial chlorine suppliers
- Avoid the risk inherent in the transport and handling of chlorine products
- Lower the operating costs
- Achieve a complete automatic process which requires minimal operator attendance

Ecoline[™] = Water + Electricity

ECOLINE[™] IS UNIQUE

Winner in 2009 QLD Telstra Business Awards, 2009 Piscina Innovation Award, Finalist in the 2009 International Stevie Award for the Best Innovative Product of the Year and Gold Winner in 2009 International Gaia Awards, Ecoline[™] is a new, revolutionary on-site in-line chlorine generation plant capable of producing chlorine in very low (1200ppm) water salinity. This level is far below human detection of salty taste (2500ppm) and is specifically designed for fresh water swimming pools.

ECOLINE[™] IS GREEN

Virtually eliminating the need for dangerous chemicals, Ecoline[™] is a safe and environmentally friendly alternative to traditional water treatment. Green Building Scheme Pre-Assessment found this product highly likely to contribute to the achievement of Green Building rating tool credits. Also water consumption is substantially decreased with the use of the unit.

ECOLINE[™] IS VERSATILE

AIS have developed various designs to suit many applications. Ecoline[™] can be retrofitted to any existing installation.

ECOLINE[™] IS SAFE

Ecoline[™] eliminates chemical contamination risk to the environment and operator exposure to dangerous fumes. Australian made and designed, Ecoline[™] is robust, reliable and comes with a three-year warranty.





FSRC SERIES

FRESH WATER ELECTROLYSERS CHLORINE GENERATORS

- Reverse polarity leads to reduction in maintenance by de-scaling calcium build-up on the electrode
- Powered by switch mode power supply (SMPS)
- Considerably more efficient than transformer powered electrolyzers/chlorine generators
- Expected electrode life - 45,000 hours
- Build-in cell cleaning function
- Sealed, internally cooled power supply (IP 44)
- Skid mounted modular design
- TDS Range: 1,200 - 4,000 ppm
- Warranty - 3 years

MODEL	CHLORINE* g/h		POWER CONSUMPTION** kW		MINIMUM WATER FLOW Litres/Minute	PIPE DN mm	DIMENSION (PACKAGED) L x W x H (cm)	WEIGHT GROSS Kg
	at 1200 mg/L TDS	at 2500 mg/L TDS	at 1200 mg/L TDS	at 2500 mg/L TDS				
FSRCN-65	65	98	1.1	0.93	80	50	120 x 62 x 127	172
FSRCN-100	98	147	1.66	1.39	120	50	120 x 62 x 127	178
FSRCN-130	130	196	2.2	1.85	230	80	137 x 62 x 148	234
FSRCN-200	195	294	3.31	2.78	230	80	137 x 62 x 148	238
FSRCN-260	260	392	4.41	3.7	480	100	160 x 65 x 159	310
FSRCN-325	325	490	5.51	4.63	480	100	160 x 65 x 159	320
FSRCN-400	390	588	6.61	5.55	480	100	160 x 65 x 159	340
FSRCN-550	552	833	9.36	7.86	750	125	140 x 100 x 159	470
FSRCN-650	650	980	11.02	9.25	750	125	140 x 100 x 159	490
FSRCN-800	780	1180	13.22	11.14	900	150	156 x 940 x 159	540
FSRCN-1100	1105	1670	18.73	15.77	1280	150	166 x 118 x 159	740
FSRCN-1300	1300	1742	22.03	16.45	1710	150	166 x 118 x 159	890
FSRCN-1700	1660	2500	28.14	23.6	1920	200	175 x 160 x 159	1170
FSRCN-2000	1950	2613	33.05	24.66	2250	250	175 x 160 x 159	1340
FSRCN-2200	2210	3330	37.46	31.44	2580	250	186 x 185 x 159	1650
FSRCN-2600	2600	3484	44.07	32.88	3000	250	186 x 185 x 159	1980
FSRCN-2800	2760	4165	46.78	39.32	3200	300	256 x 193 x 159	2470
FSRCN-3300	3315	4998	56.27	47.18	3750	300	270 x 203 x 159	2580
FSRCN-4000	3900	5226	66.1	49.33	4500	300	270 x 203 x 159	2750

NB: Larger capacity models are available upon request. For full listing please visit www.aiswater.com.au *at 38% of Chlorides in the TDS. Please note that pH greater than 7.5 increases chlorine demand. **at 25°C and specified high flow rates. Normal operation pressure up to 275 kPa. Data provided in the table above to be used as a guide only. Spare parts readily available including replacement cells. Recommended TDS level for Ecoline operation (for home or commercial use): 1,200ppm - 2,500ppm*

*TDS stands for total dissolved solids and represents the total concentration of dissolved substances in water. Dissolved substances can include minerals, salts, metals and organic matter and can originate from natural sources and as a result of human activities. PPM is the amount of TDS in a given volume of water, expressed in units of parts per million (ppm).



AutoChlor®

ADVANCED SALT WATER CHLORINATORS



AC/RP-100/150 MIDI SERIES

AUTOMATIC, INLINE SALT OR MINERAL
WATER CHLORINE GENERATORS

- Produces chlorine automatically, onsite and inline
- Robust and reliable
- Reverse polarity (RP) technology
- Suitable for salt or mineral water pools including spas
- Compact and easy to install
- Convectional cooling technology
- Salinity 3,000 - 5,000 ppm
- Warranty: Residential application - 3 years, Commercial application - 1 year

MODEL	CHLORINE	INPUT AC POWER CONSUMPTION	WATER FLOW	DIMENSION (PACKAGED)	WEIGHT GROSS
	Grams / Hour	kW	Litres / Minute	L x W x H (cm)	Kg
RP100	100	1.0	150 - 450	73 X 57 X 38	46
AC100	100	1.0	150 - 450	73 X 57 X 38	46
RP150	150	1.2	150 - 450	73 X 57 X 38	48
RP100LS	100	1.3	150 - 450	73 X 57 X 38	48

OPTIONS (AVAILABLE TO AUSTRALIAN CUSTOMERS ONLY)

PREFIX	DESCRIPTION	ADDITIONS AVAILABLE FOR
T	Timer Option	RP 100 / RP150 / AC 100 / RP100LS
QT	Timer With Battery Back Up	AC100 / RP100 / RP150 / RP100LS



NB: When ordering desirable model with options, simply add prefix to the model code. Example: AC25. Spare parts readily available including replacement cells.
Recommended TDS level for AutoChlor operation: 5,000ppm*



CLASSIC AC SERIES

SALT WATER ELECTROLYSERS
CHLORINE GENERATORS

- Non-reverse polarity
- Powered by transformer power supply
- Salinity 5,000 ppm
- Warranty: Residential application - 3 years,
Commercial application - 1 year

MODEL	CHLORINE	INPUT AC POWER CONSUMPTION	WATER FLOW	DIMENSION (PACKAGED)	WEIGHT GROSS
	Grams / Hour	kW	Litres / Minute	L x W x H (cm)	Kg
ACMINI	5	0.070	150 - 450	39 x 35 x 28	11
AC15	15	0.215	150 - 450	39 x 35 x 28	11
AC20	20	0.290	150 - 450	39 x 35 x 28	11
AC25	25	0.360	150 - 450	39 x 35 x 28	11
AC35	35	0.505	150 - 450	39 x 35 x 28	27
AC50	50	0.540	150 - 450	39 x 35 x 28	27
AC50HD	50 With Heavy Duty Grade Electrodes	0.720	150 - 450	39 x 35 x 28	27

OPTIONS (AVAILABLE TO AUSTRALIAN CUSTOMERS ONLY)

PREFIX	DESCRIPTION	ADDITIONS AVAILABLE FOR
T	Timer Option	Mini/15/20/25/35/50/50HD
QT	Timer With Battery Back Up	Mini/15/20/25/35/50/50HD
L12	Underwater Light Option 12V	Mini/15/20/25
L24	Underwater Light Option 24V	Mini/15/20/25
L32	Underwater Light Option 32V	Mini/15/20/25



NB: When ordering desirable model with options, simply add prefix to the model code. Example: AC25 TL12. Spare parts readily available including replacement cells.
Recommended TDS level for AutoChlor operation: 5,000ppm*



CLASSIC RP SERIES

SALT WATER ELECTROLYSERS CHLORINE GENERATORS

- Reverse polarity (reduced maintenance)
- The reversing action de-scales the build-up of calcium and reduces electrode cleaning maintenance by 95%
- Powered by transformer power supply
- Salinity 5,000 ppm
- Warranty: Residential application - 3 years, Commercial application - 1 year

MODEL	CHLORINE GAS EQUIVALENT	INPUT AC POWER CONSUMPTION	WATER FLOW	DIMENSION (PACKAGED)	WEIGHT GROSS
	Grams / Hour	kW	Litres / Minute	L x W x H (cm)	Kg
RPMINI	5	0.070	150 - 450	37 x 35 x 28	11
RP7	7	0.100	150 - 450	39 x 19 x 30	5.5
RP15	15	0.215	150 - 450	37 x 35 x 28	11
RP20	20	0.290	150 - 450	37 x 35 x 28	11
RP25	25	0.360	150 - 450	37 x 35 x 28	11
RP36	36	0.290	150 - 450	37 x 35 x 28	11
RP50	50	0.760	150 - 450	43 x 33 x 28	27
RP64	64	0.505	150 - 450	43 x 33 x 28	27

OPTIONS (AVAILABLE TO AUSTRALIAN CUSTOMERS ONLY)

PREFIX	DESCRIPTION	ADDITIONS AVAILABLE FOR
T	Timer Option	Mini/15/20/25/36/50/64
QT	Timer With Battery Back Up	Mini/15/20/25/36/50/64
L12	Underwater Light Option 12V	Mini/15/20/25
L24	Underwater Light Option 24V	Mini/15/20/25
L32	Underwater Light Option 32V	Mini/15/20/25



NB: When ordering desirable model with options, simply add prefix to the model code. Example: AC25 TL12. Spare parts readily available including replacement cells.
Recommended TDS level for AutoChlor operation: 5,000ppm*



LS 3500 SERIES

LOW SALT WATER ELECTROLYSERS
CHLORINE GENERATORS



- 30-50% saving on cost of salt
- Reverse polarity (reduced maintenance)
- The reversing action de-scales the build-up of calcium and reduces electrode cleaning maintenance by 95%
- Powered by transformer power supply
- Salinity 3,500 ppm
- Warranty: Residential application - 3 years, Commercial application - 1 year

MODEL	CHLORINE	INPUT AC POWER CONSUMPTION	WATER FLOW	DIMENSION (PACKAGED)	WEIGHT GROSS
	Grams / Hour	kW	Litres / Minute	L x W x H (cm)	Kg
RP20T-3500ppm	20	0.360	150-450	38 x 35 x 28	11
RP25T-3500ppm	25	0.360	150-450	38 x 35 x 28	11.5
RP35T-3500ppm	35	0.505	150-450	43 x 33 x 28	16



RP7 SERIES

AUTOMATIC, INLINE SALT
CHLORINE GENERATORS



- Specially designed for smaller sized pools
- Produces chlorine automatically, onsite and inline (as water flows through the system) via electrolysis.
- Suitable for salt or mineral water pools including spas
- Robust and reliable
- Reverse polarity (RP) technology
- Compact and easy to install
- Convectional cooling technology
- Salinity 5,000 ppm
- Warranty: Residential application - 3 years, Commercial application - 1 year

MODEL	CHLORINE	INPUT AC POWER CONSUMPTION	WATER FLOW	DIMENSION (PACKAGED)	WEIGHT GROSS
	Grams / Hour	kW	Litres / Minute	L x W x H (cm)	Kg
RP7	7	0.100	150-450	39 x 19 x 30	5.5





SMC SERIES

SALT WATER ELECTROLYSERS CHLORINE GENERATORS

- Reverse polarity (reduced maintenance)
- The reversing action de-scales the build-up of calcium and reduces electrode cleaning maintenance by 95%
- Powered by switch mode power supply (SMPS)

- Considerably more efficient than transformer powered electrolyzers/chlorine generators
- Smaller and lighter means easy installation into tight spaces
- Bipolar electrode and superior coating of electrodes extends electrode life
- Salinity 5,000 ppm
- Warranty: Residential application - 3 years, Commercial application - 1 year

MODEL	CHLORINE GAS EQUIVALENT	INPUT AC POWER CONSUMPTION*	WATER FLOW	DIMENSION (PACKAGED)	WEIGHT GROSS
	Grams / Hour	kW	Litres / Minute	L x W x H (cm)	Kg
SMC20	20	0.250	150 - 450	48 x 35 x 17	4.5
SMC20T	20	0.250	150 - 450	48 x 35 x 17	4.5
SMC30	30	0.330	150 - 450	48 x 35 x 17	4.5
SMC30T	30	0.330	150 - 450	48 x 35 x 17	4.5



PRO SERIES

SALT WATER ELECTROLYSERS CHLORINE GENERATORS

- Reverse polarity (reduced maintenance)
- Powered by transformer power supply
- High ingress protection
- The reversing action de-scales the build-up of calcium and reduces electrode cleaning maintenance by 95%
- Salinity 5,000 ppm
- Warranty: Residential application - 3 years, Commercial application - 1 year

MODEL	CHLORINE	INPUT AC POWER CONSUMPTION*	WATER FLOW	DIMENSION (PACKAGED)	WEIGHT GROSS
	Grams / Hour	kW	Litres / Minute	L x W x H (cm)	Kg
PRO-RP15QT	15	0.18	150 - 450	70 x 35 x 22	12
PRO-RP20QT	20	0.20	150 - 450	70 x 35 x 22	12.5
PRO- RP25QT	25	0.24	150 - 450	70 x 35 x 22	13



MineralChlor®



GENERIC SERIES

ADVANCED MINERAL POOL CHLORINATOR

- Specially designed for mineral water swimming pools and spas
- Reverse polarity (reduced maintenance)
- Powered by switch mode power supply
- For magnesium, potassium and/or calcium chloride systems as well as traditional sodium chloride pools
- The reversing action de-scales the build-up of calcium and reduces electrode cleaning maintenance by 95%
- TDS: 2,500 ppm
- Warranty: Residential application - 3years, Commercial application - 1year

MODEL	CHLORINE	POWER CONSUMPTION**	BRINE/SEAWATER FLOW RATE	DIMENSION (PACKAGED)	WEIGHT GROSS
	Grams / Hour	KW	Litres / Minute	L x W x H (cm)	Kg
SMC20TA-2500PPM	20	0.330	150-450	52 x 50 x 15	7
SMCE20-2500PPM	20	0.330	150-450	52 x 50 x 15	7



NB: Recommended TDS level for MineralChlor operation (for home or commercial use): 2,500ppm * # All MineralChlor TM products include Genuine AIS Anodes.

*TDS stands for total dissolved solids and represents the total concentration of dissolved substances in water. Dissolved substances can include minerals, salts, metals and organic matter and can originate from natural sources and as a result of human activities. PPM is the amount of TDS in a given volume of water, expressed in units of parts per million (ppm).

CHROME



CHROME SERIES

RESIDENTIAL SALT WATER
CHLORINE GENERATOR

- Affordable, quality system
- Reverse polarity (RP) technology
- Circuit breaker
- Pump output socket
- Warning indicator lights
- Chlorine controller and output indicator
- Genuine AIS Anodes
- Salinity 5,000 ppm
- Warranty - 1 year

MODEL	CHLORINE	POWER CONSUMPTION**	BRINE/SEAWATER FLOW RATE	DIMENSION (PACKAGED)	WEIGHT GROSS
	Grams / Hour	KW	Litres/Minute	L x W x H (cm)	Kg
CHROME-20	20	0.28	150 - 450	57 x 45 x 25	10
CHROME-20T	20	0.29	150 - 450	57 x 45 x 25	10
CHROME-30	30	0.35	150 - 450	57 x 45 x 25	11
CHROME-30T	30	0.36	150 - 450	57 x 45 x 25	11



EcoLine®

A REVOLUTION FOR HOME
FRESH WATER* POOLS & SPAS



ECOLINE™ 20T & 30T

CHLORINE GENERATOR FOR
FRESH WATER* SWIMMING POOLS

- Produces chlorine automatically, onsite and inline
- Robust and reliable
- Reverse polarity (RP) technology
- Suitable for fresh water* water pools and spas
- Convectional cooling technology
- Salinity 1,200 ppm
- Warranty: Residential application - 3 years,
Commercial application - 1 year
- Integrated acid dosing system
- IP56 - High degree of protection

Model	Chlorine	Input AC Power Consumption	Water Flow	Dimension (Packaged)	Weight Gross
	Grams/ Hour	kW	Litres/ Minute	L x W x H (cm)	Kg
EcoLine™ - 20T	20	0.45	150 - 450	85 x 65 x 28	20.5
EcoLine™ - 30T	30	0.65	150 - 450	85 x 65 x 28	21



*AIS defines fresh water swimming pools as having Total Dissolved Solids (TDS) levels of 1200ppm - 2500ppm



The heart of every AIS chlorine generator

As a leading water disinfection company AIS insists on high standards, particularly when it comes to the technology at the heart of each one of its chlorine generators.

When AIS could not find an anode supplier to meet its exacting standards, the company took matters into its own hands and decided to manufacture its own. In 1998 the first batch of Genuine AIS Anodes was born. Today AIS produces thousands of anodes each year at one of its three production facilities in Brisbane, Australia.

Genuine AIS Anodes begin their life as a plate of pure, high-quality titanium. Titanium has a unique strength-to-weight ratio, resists corrosion and is non-allergenic. Each pure titanium plate undergoes a multi-stage cleaning and etching process which allows it to bond with AIS' unique ruthenium compound-based catalytic coating (which is painstakingly applied and cured, one microscopically thin coat at a time).

The curing process involves repeated baking, to temperatures that would melt lesser metals. Over many weeks, the catalytic coating is turned into a ceramic-like material that is much more efficient in chlorine generation than the original titanium beneath it. Despite being covered

in dozens of layers, the total width of the catalytic coat on some AIS Anodes is less than a fifth of the width of a strand of human hair.

Genuine AIS Anodes' proprietary coating increases the efficiency of the electrolysis process along with the life of the electrodes.

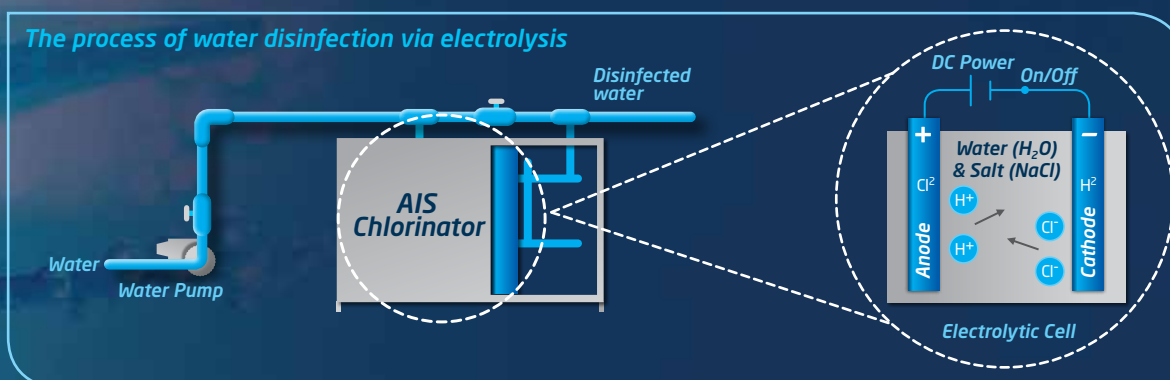
The finished anodes are then cut to size and assembled by AIS' skilled and experienced production team to create the electrolytic cells that facilitate the electrolysis process at the heart of all AIS chlorinators.

Inside each electrolytic cell an electrical current passes between two electrodes through an electrolyte (water containing minerals like sodium chloride). Hydrogen ions move to the cathode and turn into hydrogen. Chloride ions move to the anode and turn into chlorine.

Meanwhile sodium and hydroxide ions get left behind and stay in the solution. This provides all the necessary ingredients for the automatic formation of Hypochlorous Acid (commonly referred to as Chlorine), an effective and proven water disinfectant.

This process occurs not only within the electrolytic cell but inside the treated water itself, meaning a stop to the endless cycle of traditional chemical dosing forever.

The process of water disinfection via electrolysis

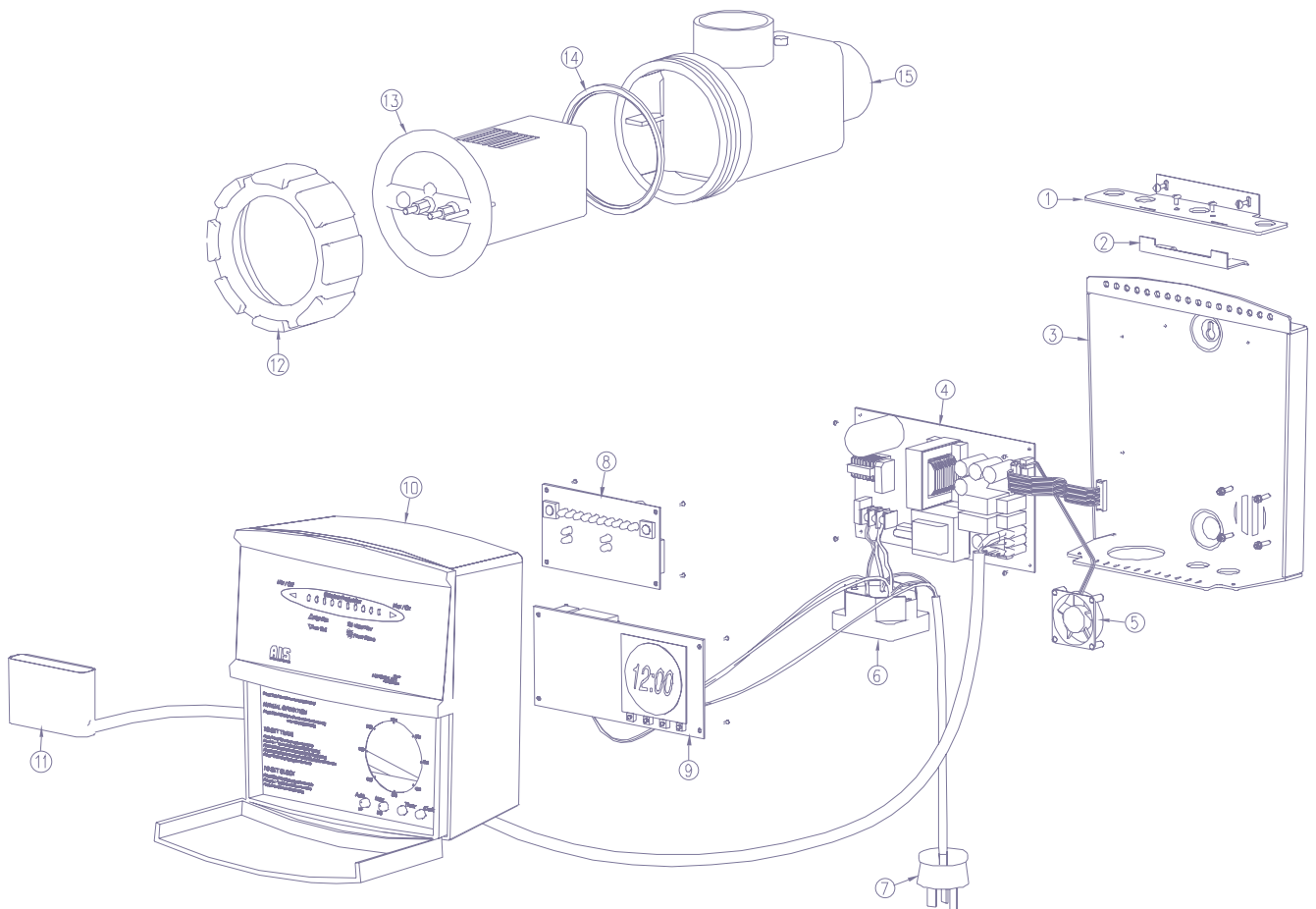


To learn more about AIS' exclusive anode technology visit www.aiswater.com.au

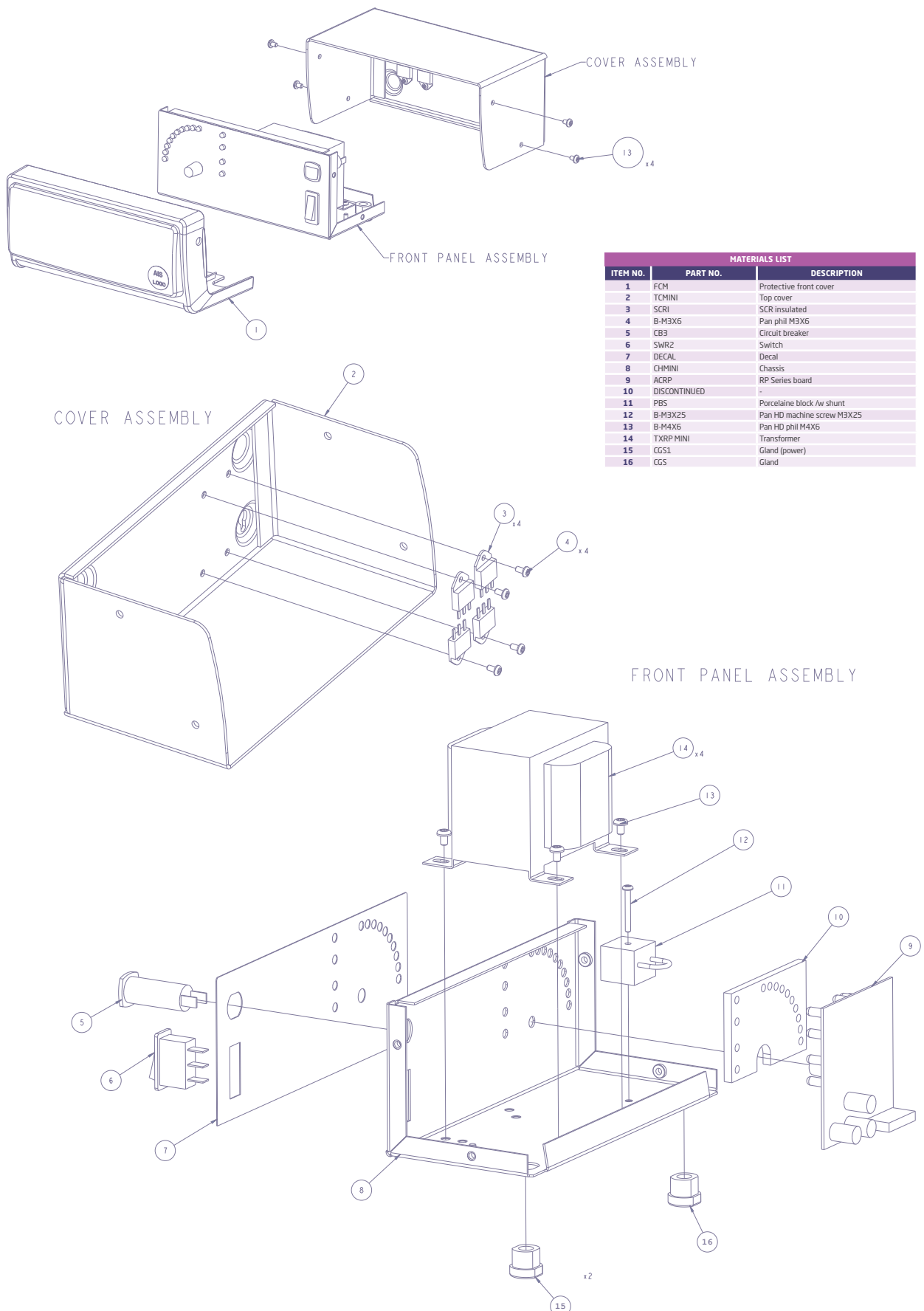
AIS Australian Innovative Systems™

Schematic Drawing of SMC20 | SMC30

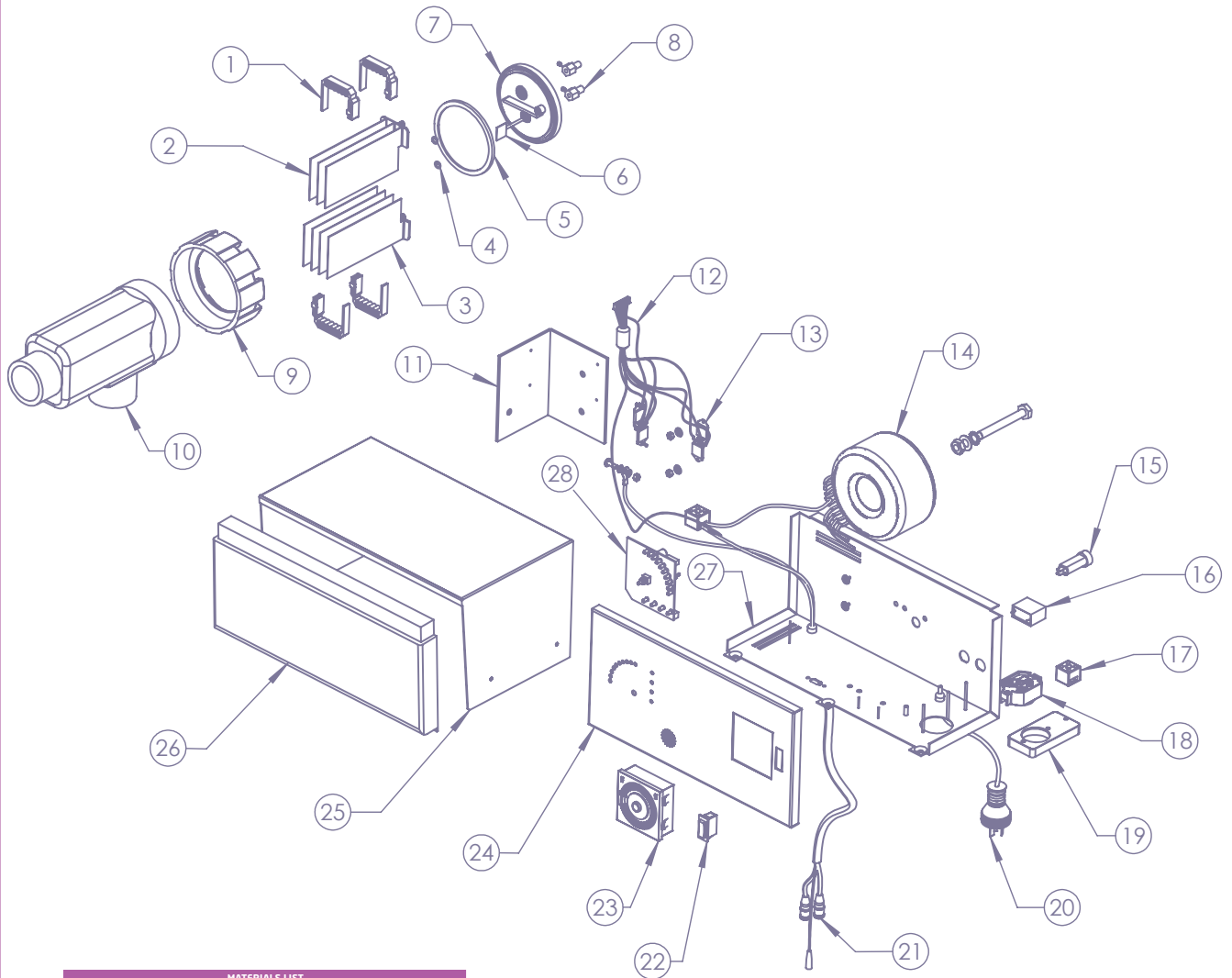
MATERIALS LIST		
ITEM NO.	PART NO.	DESCRIPTION
1	TPHSPSMC	Heatsink plate SMC chlorine generator
2	TPHSCSMC	Clamp heatsink SMC chlorine generator
3	TPBPSCMC20/30	Base plate SMC20 chlorine generator
4	TPSMPS8	Board switch mode power supply
5	TPKD2404PFB2-8	Fan 40 x 40 mm 24V DC
6	PO	Socket 240V pump outlet
7	L240B	Lead & 3 pin plug 240V 3 core flex blue
8	TPSMCB	Board switch mode controller
9	TCELCD	Time clock electronic LCD display
10	TCSMCC	Top cover SMC chlorine generator (complete)
11	CLSMC	Cell lead SMC chlorine generator
12	SDBLR	Ring locking threadlock cell blue
13	CELLSMC20/30	Cell SMC20 bi-polar chlorine generator
14	ORTLC	O-Ring threadlock housing
15	CHTM	Housing threadlock cell clear



Schematic Drawing of RP7



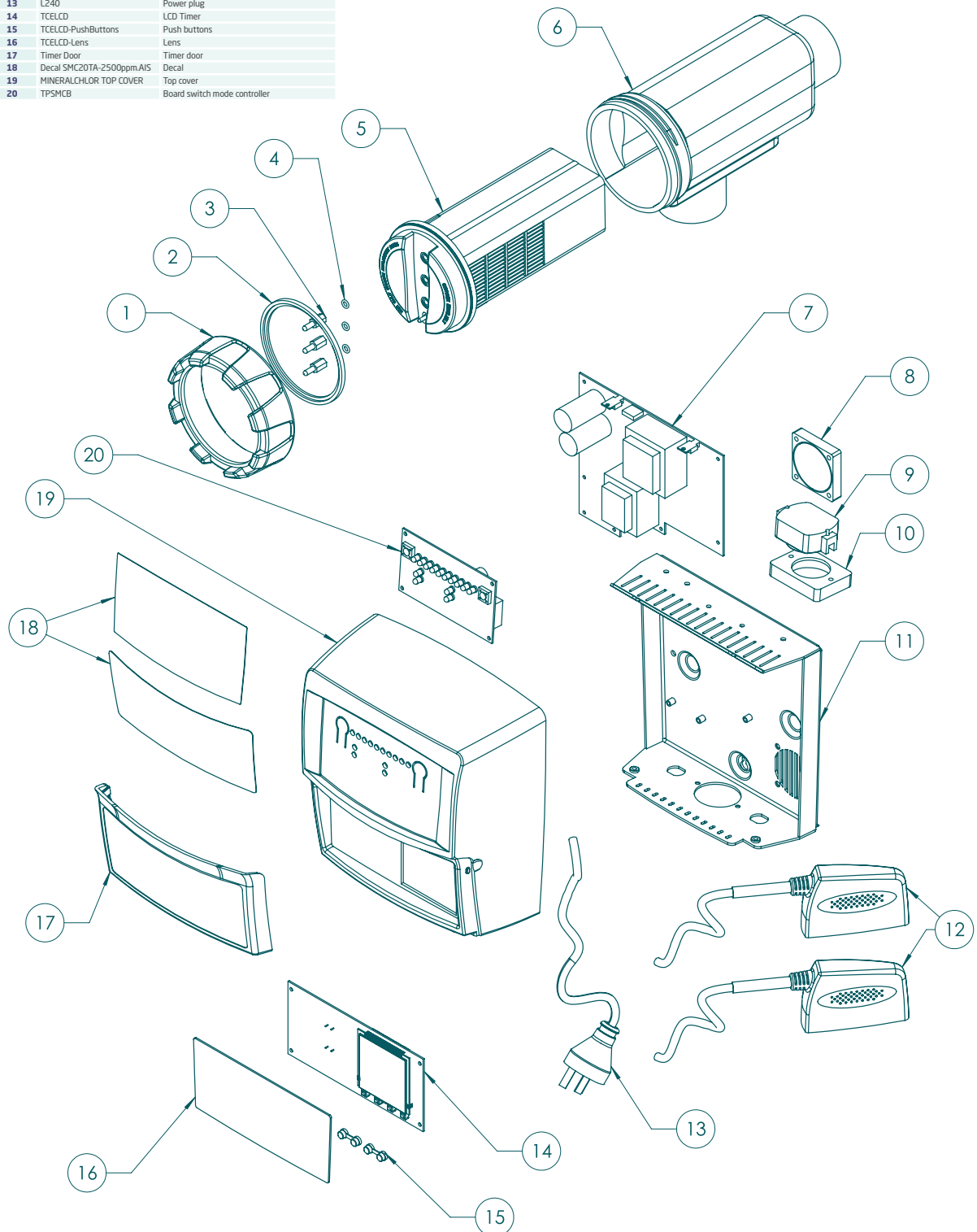
Schematic Drawing of RP25



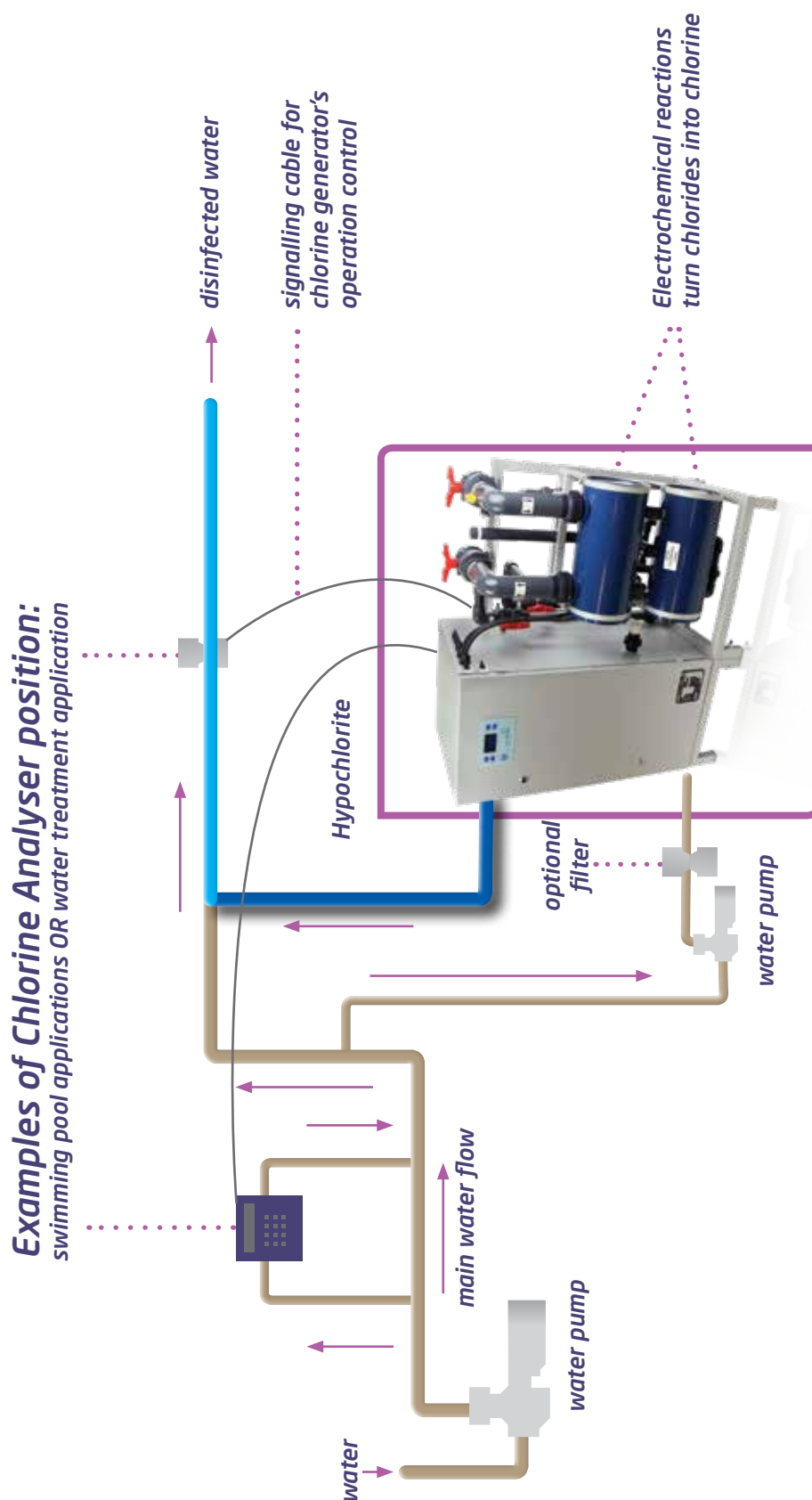
MATERIALS LIST		
ITEM NO.	PART NO.	DESCRIPTION
1	CS	7 blade cell spacer AC Series (2 Pcs per Set)
2	ANOD	Anode
3	CATHODE	Cathode
4	OR1/4	O-Ring 1/4"
5	ORTLC	O-Ring threadlock housing
6	TPCWS3.5X60	Cell water sensor pin
7	CAPTH	Threadlock cap
8	CHPOM	Cell hardware male push on brass connectors
9	LR	Locking ring
10	CHTS	Cell housing threadlock small
11	STHSP25	Heat sink plate 25Amp
12	ACRPWH	Control wiring harness
13	SCR4	SCR 2 way (RP)
14	TXPL350VA	Toroidal transformer
15	CB3	Circuit breaker
16	CAPACITOR1.5UF	Met cap 1.5 uF 250 VAT
17	PB	Porcelaine block without shunt
18	PO	240V pump outlet
19	MB	Mounting block
20	L240	Lead and 3 pin plug
21	CL25POC	Cell lead 25Amp
22	SWR3	Switch 3 way rocker
23	TOM	Time clock matsushita
24	FPACT	Front panel
25	TCSTD	Lid standard unit
26	FCS	Front cover small
27	CHSTD	Chassis standard
28	ACRP	RP Series board

Schematic Drawing of Generic Series

MATERIALS LIST		
ITEM NO.	PART NO.	DESCRIPTION
1	LR1	Locking ring
2	ORTLC	O-Ring threadlock housing
3	Terminal SMC	Cell terminal
4	CBBS006	O-Ring
5	CellSMCA30	SMC30 cell
6	CHTM	Cell housing threadlock medium
7	TPSMPSB	Power supply board
8	TPKD2404PFB2-8	Fan
9	PO	Pump outlet
10	MB(SMC)	Mounting block SMC
11	TPBPMSCE20	SMC20 base plate
12	CLSMC	SMC cell lead
13	L240	Power plug
14	TCELCD	LCD Timer
15	TCELCD-PushButtons	Push buttons
16	TCELCD-Lens	Lens
17	Timer Door	Timer door
18	Decal SMC20TA-2500ppm.AIS	Decal
19	MINERALCHLOR TOP COVER	Top cover
20	TPSMCB	Board switch mode controller



Installation Drawing



POSSIBLE APPLICATIONS

Fresh water swimming pools & water features desalination, fresh water aqua parks, fresh water lagoons, aquariums with fresh water animals, cooling water for power stations, water for cooling towers, grey water and food processing plants.



Water	Water2	Energy	FSRCN-65	FSRCN-100	FSRCN-130	FSRCN-200	FSRCN-260	FSRCN-325	FSRCN-400	FSRCN-550
TDS, mg/L	CL-, mg/L	kWh AC/kg Cl2	Cl2, g/h	Cl2, g/h	Cl2, g/h	Cl2, g/h	Cl2, g/h	Cl2, g/h	Cl2, g/h	Cl2, g/h
1200	1050	16.95	65	98	130	195	260	325	390	553
1300	1090	16.11	67	101	134	201	268	335	402	570
1400	1163	15.27	69	104	138	207	276	345	414	587
1500	1246	14.42	71	107	142	213	284	355	426	604
1600	1350	13.58	73	110	146	219	292	365	438	621
1700	1380	12.74	75	113	150	225	300	375	450	638
1800	1400	11.90	80	120	160	240	320	400	480	680
1900	1470	11.05	86	129	172	258	344	430	516	731
2000	1500	10.21	89	134	178	267	356	445	534	757
2500	1950	9.44	98	147	196	294	392	490	588	833
3000	2450	8.67	105	158	210	315	420	525	630	893

FSRCN-650	FSRCN-800	FSRCN-1100	FSRCN-1300	FSRCN-1700	FSRCN-2000	FSRCN-2200	FSRCN-2600	FSRCN-2800	FSRCN-3 300	FSRCN-4000
Cl2, g/h	Cl2, g/h	Cl2, g/h	Cl2, g/h	Cl2, g/h	Cl2, g/h	Cl2, g/h	Cl2, g/h	Cl2, g/h	Cl2, g/h	Cl2, g/h
650	780	1105	1300	1658	1950	2210	2600	2763	3315	3900
670	804	1139	1340	1709	2010	2278	2680	2848	3417	4020
690	828	1173	1380	1760	2070	2346	2760	2933	3519	4140
710	852	1207	1420	1811	2130	2414	2840	3018	3621	4260
730	876	1241	1460	1862	2190	2482	2920	3103	3723	4380
750	900	1275	1500	1913	2250	2550	3000	3188	3825	4500
800	960	1360	1600	2040	2400	2720	3200	3400	4080	4800
860	1032	1462	1720	2193	2580	2924	3440	3655	4386	5160
890	1068	1513	1780	2270	2670	3026	3560	3783	4539	5340
980	1176	1666	1960	2499	2940	3332	3920	4165	4998	5880
1050	1260	1785	2100	2678	3150	3570	4200	4463	5355	6300

Ecoline™ FSRC models capacities in grams per hour of pure chlorine gas equivalent. Power consumption at water temperature +28°C.

POSSIBLE APPLICATIONS

Spa and swimming pools, Water features & fountains, Aqua Parks, lagoons, Aquariums with seawater animals, Cooling water for power stations, Seawater for cooling towers, Seawater for a ship's ballast, Pre-treatment of seawater before desalination.



Water	Water2	Energy	SRC-100	SRC-150	SRC-200	SRC-300	SRC-400	SRC-500	SRC-625	SRC-800	SRC-1000	SRC-1250	SRC-1500	SRC-2000	SRC-2500	SRC-3000
TDS, mg/L	CL-, mg/L	kWh AC/kg	Cl2, g/h	Cl2, g/h	Cl2, g/h	Cl2, g/h	Cl2, g/h	Cl2, g/h	Cl2, g/h	Cl2, g/h	Cl2, g/h	Cl2, g/h	Cl2, g/h	Cl2, g/h	Cl2, g/h	Cl2, g/h
3000	2270	8.79	78	117	156	235	313	391	489	626	782	978	1174	1565	1956	2347
3500	2648	7.90	84	126	167	251	335	418	523	669	837	1046	1255	1673	2092	2510
4000	3241	7.13	89	134	178	267	357	446	557	713	891	1114	1337	1783	2228	2674
4500	3646	6.44	95	142	189	284	378	473	591	757	946	1182	1419	1891	2364	2837
5000	4025	5.84	100	150	200	300	400	500	625	800	1000	1250	1500	2000	2500	3000
5500	4202	5.78	100	151	201	301	402	502	628	804	1005	1256	1507	2009	2512	3014
6000	4584	5.72	101	151	202	303	404	505	631	807	1009	1262	1514	2019	2523	3028
6500	4895	5.67	101	152	203	304	406	507	634	811	1014	1268	1521	2028	2535	3042
7000	5172	5.61	102	153	204	306	407	509	637	815	1019	1273	1528	2037	2547	3056
7500	5367	5.56	102	154	205	307	409	512	640	819	1023	1279	1535	2047	2558	3070
8000	5614	5.50	103	154	206	308	411	514	643	822	1028	1285	1542	2056	2570	3084
8500	5917	5.45	103	155	207	310	413	516	645	826	1033	1291	1549	2065	2582	3098
9000	6112	5.40	104	156	207	311	415	519	648	830	1037	1297	1556	2075	2593	3112
9500	6259	5.34	104	156	208	313	417	521	651	834	1042	1303	1563	2084	2605	3126
10000	6558	5.29	105	157	209	314	419	523	654	837	1047	1308	1570	2093	2617	3140
12000	7961	5.08	107	160	213	320	426	533	666	852	1065	1332	1598	2131	2663	3196
14000	8994	4.88	108	163	217	325	434	542	678	867	1084	1355	1627	2169	2711	3253
16000	10315	4.69	110	165	221	331	441	552	689	882	1103	1379	1655	2206	2758	3309
18000	11842	4.50	112	168	224	337	449	561	701	897	1122	1402	1683	2243	2804	3365
20000	12375	4.33	114	171	228	342	456	570	713	912	1140	1425	1711	2281	2851	3421
22000	13627	4.15	116	174	232	348	464	580	724	927	1159	1449	1739	2318	2898	3477
24000	14964	3.98	118	177	236	353	471	589	736	942	1178	1472	1767	2355	2944	3533
26000	16257	3.82	120	179	239	359	478	598	748	957	1196	1495	1794	2392	2990	3588
28000	17559	3.66	121	182	243	364	486	607	759	972	1215	1518	1822	2429	3037	3644
30000	18595	3.51	123	185	247	370	493	617	771	987	1233	1542	1850	2467	3083	3700
32000	19935	3.36	125	188	250	376	501	626	783	1002	1252	1565	1878	2504	3130	3756
34000	21074	3.21	127	191	254	381	508	635	794	1017	1271	1588	1906	2541	3177	3812
35000	21875	3.14	128	192	256	384	512	640	800	1024	1280	1600	1920	2560	3200	3840

Autochlor™ SRC models capacities in grams per hour of pure chlorine equivalent. Power consumption at water temperature + 28°C.

ABOUT AIS

Australian Innovative Systems (AIS) is a multi-award winning leader in the design and manufacture of chlorine generators for fresh*, mineral and salt water swimming pools.

With over 25 years' industry experience, AIS' reputation for innovation, quality and excellence has been firmly established worldwide.

AIS' technology has been exported to over 55 countries through its comprehensive global distribution network.

OUR PRODUCTS & SERVICES

AIS' extensive range of products includes:

RESIDENTIAL

- **AutoChlor™** and **CHROME™** for salt water pools
- **EcoLine™** for fresh water* pools
- **MineralChlor™** for mineral water pools

COMMERCIAL

- **AutoChlor™** for salt water pools
- **EcoLine™** for fresh water* pools

AIS' services include water disinfection solutions, consulting, commissioning and servicing.

AIS TECHNOLOGY IN OPERATION

AIS' extensive range of chlorine generators is widely used in home swimming pools, swim schools, aquatic centres, resorts, hotels, public swimming pools and large scale water parks.

Suitable for fresh, mineral or salt water swimming pools (with TDS levels from 1,200ppm to 35,000 ppm), AIS' systems disinfect water onsite and inline, conveniently and automatically.

AIS technology uses a process known as electrolysis, whereby water passing through electrolytic cells converts minerals and salts to sodium hypochlorite (commonly known as chlorine). The chlorine is then distributed directly into the water keeping it clear and bacteria free. Depending on the application required, chlorine output levels range from seven grams to five kilograms per hour.

Visit our website to view a short animated video to learn more.



AIS' COMMITMENT TO QUALITY

Proudly Australian owned and operated, AIS conducts all research, development and production from its modern facilities and company headquarters in Brisbane, Australia.

AIS manufactures its own Genuine AIS Anodes™, the critical, high-performing component at the heart of every AIS chlorine generator.

AIS' sole focus is on the development and production of chlorine generators. This ensures optimal quality control and outstanding client service and after sales support.

FAREWELL TO TRADITIONAL CHLORINE DOSING

With AIS' water disinfection technology you can bid farewell to the endless cycle of traditional chlorine^[1] dosing forever. Risks associated with chlorine storage, handling and chemical contamination are also significantly minimised or eliminated.

[1] Typically Sodium Hypochlorite or Calcium Hypochlorite

*AIS defines fresh water swimming pools as having Total Dissolved Solids (TDS) levels of 1200ppm - 2500ppm



AutoChlor™

EcoLine™

MineralChlor™

CHROME



CALL +61 7 3396 5222
OR 1300 965 222 Australia wide

www.aiswater.com.au



Please visit aiswater.com.au for more information about our warranty program.



Genuine AIS Anodes with their unique catalytic coating, are the heart in every AIS chlorine generator.

Australian Innovative Systems

51 Millennium Place,
Tingalpa Queensland 4173 Australia

AIS™
Australian Innovative Systems